



“FLIP-FLOP” VALVES

The new G1/8" valve which is piloted by a signal in "12", commutes the outlet from 2 to 4 and vice versa at each electric or pneumatic impuls.

These valves are added to the existing ones but with overall dimensions reduced and additional electric command on M2 mechanical actuator or M3P respectively with MB coil (22mm) or MC (30mm).

PNEUMAX

COMPONENTS FOR PNEUMATIC AUTOMATION



PNEUMAX S.p.A.
LURANO (BG) - ITALY

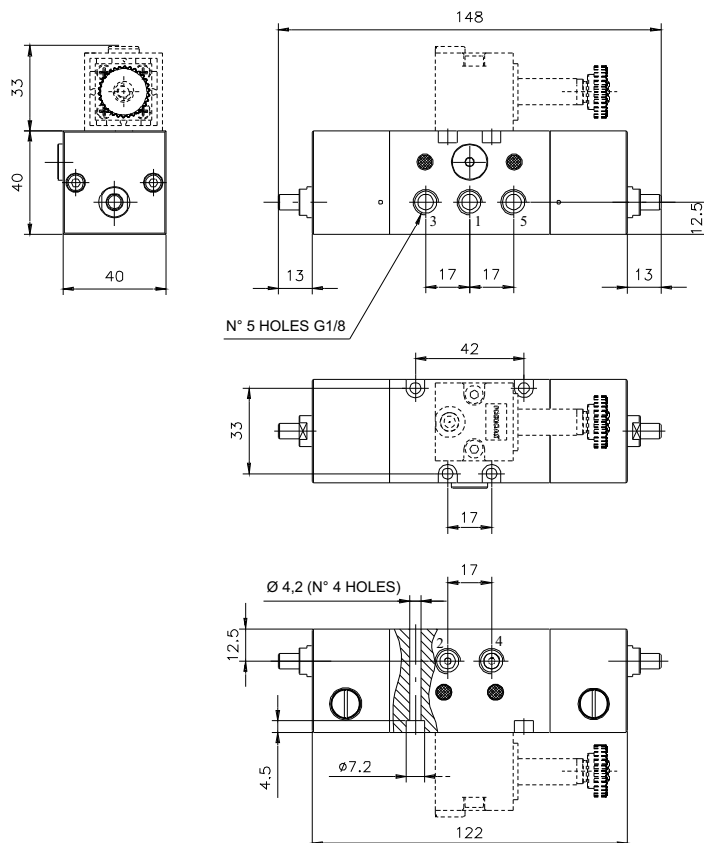


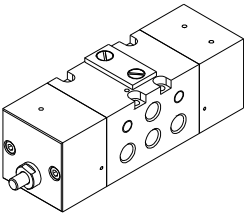
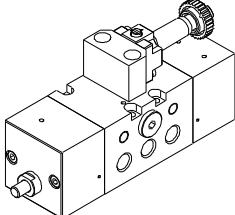
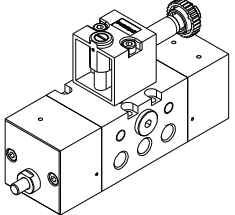
Technical characteristics

The pneumatic actuated version valve is a very simple 5/2 valve with a pilot (12) placed over the feeding (1) and two lateral manual commands to restores the phase.

The electric version valve with mechanical M2, requires the mechanical actuator mounted on the body of the valve with base 1001,05, plugging the pilot (12).

On the contrary the version valve with CNOMO M3P mechanical actuator requires the mounting of the mechanical on the upper part of the body, always plugging pilotage (12).



ORDERING CODES		
900.52.1.3	900.52.1.4	900.52.1.5
		
Pneumatic pilot	Electric pilot with M2 mechanical	Electric pilot with mechanical CNOMO M3P

Operating characteristics:

Fluid	Max. working pressure	Operative Temperature	Flow rate at 6 bar with $\Delta p=1$	\varnothing Orifice size	Working port size
Filtered and lubricated air	10 bar	Min.: -5°C Max.: +50 (+70)°C	540 NI/min	6 mm	G1/8"

Attention : Concerning the pneumatic actuated version valve, the pressure signal "12" must be the same or higher than the device feeding pressure.

Very important : be sure the distance between the pilot valve and the device is less than a 1m.

If you need increased upper distances we recommend to use a pneumatic spring actuated valve.

I dati indicati potrebbero essere soggetti a variazioni senza preavviso. - Specifications may be subject to change without prior notice.



DPL011/GB - 02/2004
PRINTED IN ITALY - 02/2004

PNEUMAX SpA
24050 LURANO (BG) - Italy
Via Cascina Barbellina, 10
Tel. 035/4192777
Fax 035/4192740
035/4192741
<http://www.pneumaxspa.com>